

JOHN CHAMBERS GRASS SEED DOT



Grounds Maintenance

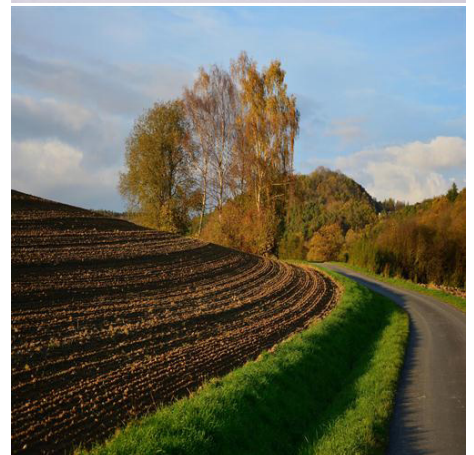
John Chambers Grass Seed DOT is a grass seed particularly used for road verges and embankments. The DOT grass seed give a great general purpose grass for hard wearing, shady, draught, maintenance and appearance, ideal for road sides.

The John Chambers Grass Seed DOT Mix contains:

- Amenity PRG.
- Strong Creeping Red Fescue.
- Hard Fescue.
- Browntop Bent.

Application Rate:

- 35g/m² - 50g/m² - New grass.
- 25g/m² - Overseeding.
- A 20kg bag of grass seed will cover the following area: 571m² when spread at 35g/m².
- 400m² when spread at 50g/m².
- Mixes may vary slightly depending on current demand and availability.
- Please check with your sales advisor at time of order.



Green-tech endeavour to ensure that the information given on this technical data sheet is accurate but accept no liability for its use or suitability for particular application.